

Future

LIVING

is Here



MAESTRO HOME LIFTS

MAESTRO



KEY FEATURES

- 904 mm of Glass Panel
- A20 Steel Door
- Standard Flooring - Astro Pitch
- Standard White Color - RAL 9016
- CI-CON with 2.2 KW motor
- Standard Ceiling with LED Lights
- Standard Control Panel
- Standard Call Buttons
- 1 year of Maintenance

- 1 year of Warranty
- Limited Sizes Available
- ** 10 years of Limited Warranty on the Screw and Drive unit



Steel Door

***but only if maintenance is done timely by our own technicians through Maestro*



MAESTRO

GOLD

CLASSIC PLUS

KEY FEATURES

- 1070mm Glass Panel
- AL5 Door
- Standard Flooring - Astro Pitch
- RFID TagReset System
- Available From XS to XL Sizes
- CI-CON with 2.2 KW motor
- Standard Ceiling with LED Lights
- Standard Control Panel
- Standard Call Buttons
- 1 year of Maintenance
- 1 year of Warranty
- ** 10 years of Limited Warranty on the Screw and Drive unit

5 COLOURS ONLY

White RAL (RAL 9016)
White Aluminium (RAL 9006)
Oyster White (RAL 1013)
Basalt Grey (RAL 7012)
Flame Red (RAL 3000)



RAL 9016 RAL 9006 RAL 1013 RAL 7012 RAL 3000



UPGRADE PACKAGES:

STYLE ME UP:

Combo 1: Platinum Colours + Floorings
Combo 2: Bigger Glass Panel Sizes upto 1200mm
Combo 3: AL6 Door + Level Indicators All Floors

WELL BEING:

Combo 1: Automatic Door + wireless elbow door opener

KEEPING YOU SAFE:

Combo 1: Child lock + Ventilation + Biometric Locks
Combo 2: Coded Locks + GSM Phone

***but only if maintenance is done timely by our own technicians through MAESTRO*



MAESTRO

GOLD

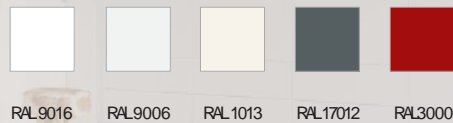
VOYAGER ELEGANCE SERIES

KEY FEATURES

- 1170 mm Glass Panel
- AL5 Door
- RFID Tag Reset System
- Available From XS to XL Sizes
- Eco-Silent Power saving with 1.5 KW motor
- Mirror Finish Ceiling with LED Lights
- Touchscreen Control Panel
- Standard Call Button
- 1 year of Maintenance
- 1 year of Warranty
- ** 10 years of Limited Warranty on the Screw and Drive unit

5 COLOURS ONLY

- > White RAL 9016
- > White Aluminium (RAL 9006)
- > Oyster White (RAL 1013)
- > Basalt Grey (RAL 7012)
- > Flame Red (RAL 3000)



UPGRADE PACKAGES:

STYLE ME UP:

- Combo 1: Platinum Colours + Floorings
- Combo 2: Bigger Glass Panel Sizes upto 1200mm
- Combo 3: AL6 Door + Level Indicators All Floors

WELL BEING:

- Combo 1: Automatic Door + wireless elbow door opener

KEEPING YOU SAFE:

- Combo 1: Child lock + Ventilation + Biometric Locks
- Combo 2: Coded Locks + GSM Phone

***but only if maintenance is done timely by our own technicians through MAESTRO*



MAESTRO PLATINUM VOYAGER AURORA SERIES

KEY FEATURES

- 1200mm Glass Panel
- AL6 Door
- Platinum Range of Colours
- Platinum Range of Floorings
- Touchscreen Control Panel
- 26 Platform Designs available
- RFID TagReset
- All Sizes
- ECO-SILENT (1.5 KW Motor)
- Mirror Ceiling with LED lights
- 1 year of Maintainace
- 1 year of Warranty
- ** 10 years of Limited Warranty on the Screw and Drive unit



UPGRADE PACKAGES

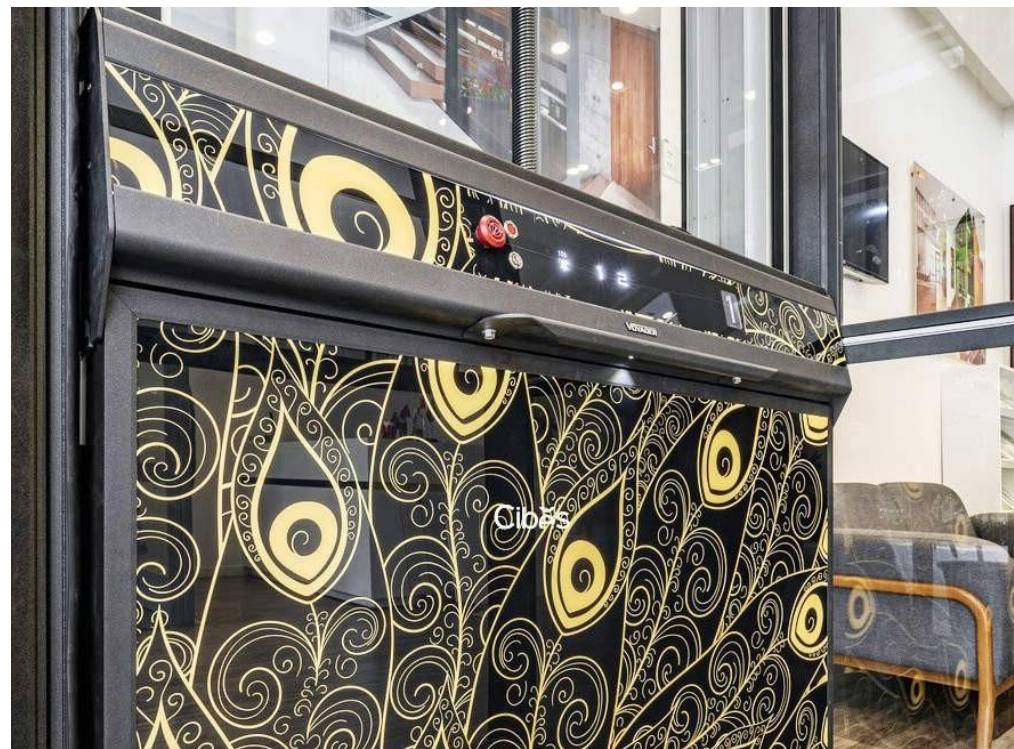
WELL BEING:

Combo 1: Automatic Door + wireless elbow door opener

KEEPING YOU SAFE:

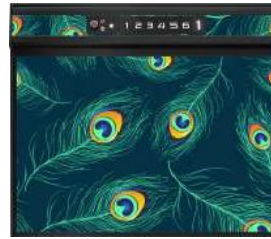
Combo 1: Child lock + Ventilation + Biometric Locks/Code Lock

***but only if maintenance is done timely by our own technicians through MAESTRO*



PREMIUM PATTERNS VOYAGER AURORA SERIES

LEDBack Lit Luminescent Control & Service Panel with High-End Designs to match the home decoration. Aurora Series has rich background options inspired by the following carefully selected themes.



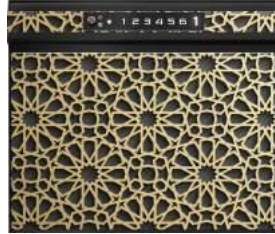
MYTHICAL AURA



ENLIGHTENED BUDDAH



BASILIKA MARBLE



MASHRABIYA GOLD



SERENE DAWN



BASILIKA MARBLE



SANDSTONE CANYON



COBALT BLUE



SEVEN ISLAND



NEW ORLEANS



GOLDEN TOPAZ



EVENING AGATE



VERONA



INCA



NOVA CLOUDS



IMPERIAL BLACK



YEREVAN



IONA
IONA



CLAY PARFAIT



CINNABAR ROSE



EULER



TUSCAN SUN



PHARAOH



DRAGON SEA



LONG SPRING



PAVONA FEATHERS



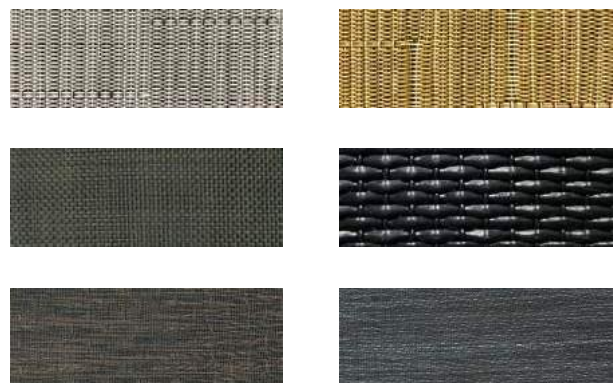
LIFT COLORS



FOREST FLOOR



PREMIUM CARPETS



MAESTRO PLATINUM VOYAGER GALAXY SERIES

KEY FEATURES

- 1200 mm Glass Panel
- AL6 Door
- Platinum Color Range
- Platinum Flooring Range
- 2 Premium Designs to choose from
- 7 color LEDback-light Platform
- Full Shaft 7 color LED Lighting
- RFID Tag Reset System
- Available From XS to XL Sizes
- Eco-Silent Power saving with 1.5 KW motor
- Special Drop Ceiling with Clove LED lighting
- Touchscreen Control Panel
- Touchscreen Call Buttons with level Indicator
- 1 year of Maintenance
- 1 year of Warranty
- ** 10 years of Limited Warranty on the Screw and Drive unit



UPGRADE PACKAGES

WELL BEING:

Combo 1: Automatic Door + wireless elbow door opener

KEEPING YOU SAFE:

Combo 1: Child lock + Ventilation + Biometric Locks/Code Lock

***but only if maintenance is done timely by our own technicians through MAESTRO*

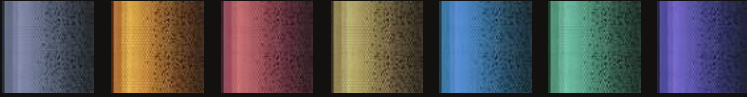


LIGHT UP EFFECTS

VOYAGER GALAXY SERIES

High Tech Effect RGBW LED Laser Light Effect on Control & Service Panel (fixed or changing LED colors).

Note: Fixed or changing through 7 selectable LED colors.



TWO PATTERNS



AWAKENING



FARADAY





LIFT COLORS



FOREST FLOOR



PREMIUM CARPETS



MAESTRO PLATINUM VOYAGER LIMITED EDITION

KEY FEATURES

- 1200 mm Glass Panel
- AL6 Door
- Platinum Color Range
- Platinum Flooring Range
- 5 Premium Designs to choose from
- Full Shaft 7 color LED Lighting
- RFID Tag Reset System
- Available From XS to XL Sizes
- Eco-Silent Power saving with 1.5 KW motor
- Special Drop Ceiling with Clove LED lighting
- Touchscreen Control Panel
- Touchscreen Call Buttons with level Indicator
- 1 year of Maintenance
- 1 year of Warranty
- ** 10 years of Limited Warranty on the Screw and Drive unit



UPGRADE PACKAGES

WELL BEING:

Combo 1: Automatic Door + wireless elbow door opener

KEEPING YOU SAFE:

Combo 1: Child lock + Ventilation + Biometric Locks/Code Lock

***but only if maintenance is done timely by our own technicians through MAESTRO*



HIGH END FINISHES

VOYAGER LIMITED SERIES

On all aluminum surfaces of platform to provide a premium feel. Available in leather, wood and carbon fiber finishes.

5 CHOICES OF 3M DI-NOC FINISHES TO CHOOSE FROM
 – All metal parts are covered. Can also custom select
 – but price high.

Eco-leather stitched traditional handrail.

*For M size 1220 x1380 mmand above, our wood finishes only have horizontal grains available not vertical.



BLACK LEATHER



CARBON FIBER



BROWN LEATHER



DARK WOOD



LIGHT WOOD



VOYAGER LIT AS STANDARD

Lighting along 4 sides glass shaft & safety edge into the ceiling lighting system with control integrated with LED multi-color control system to provide a pleasant using environment.

Big improvement for who want the most modern lighting experience.



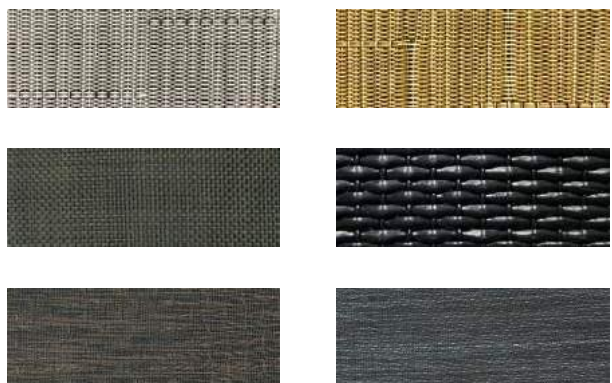
LIFT COLORS



FOREST FLOOR



PREMIUM CARPETS



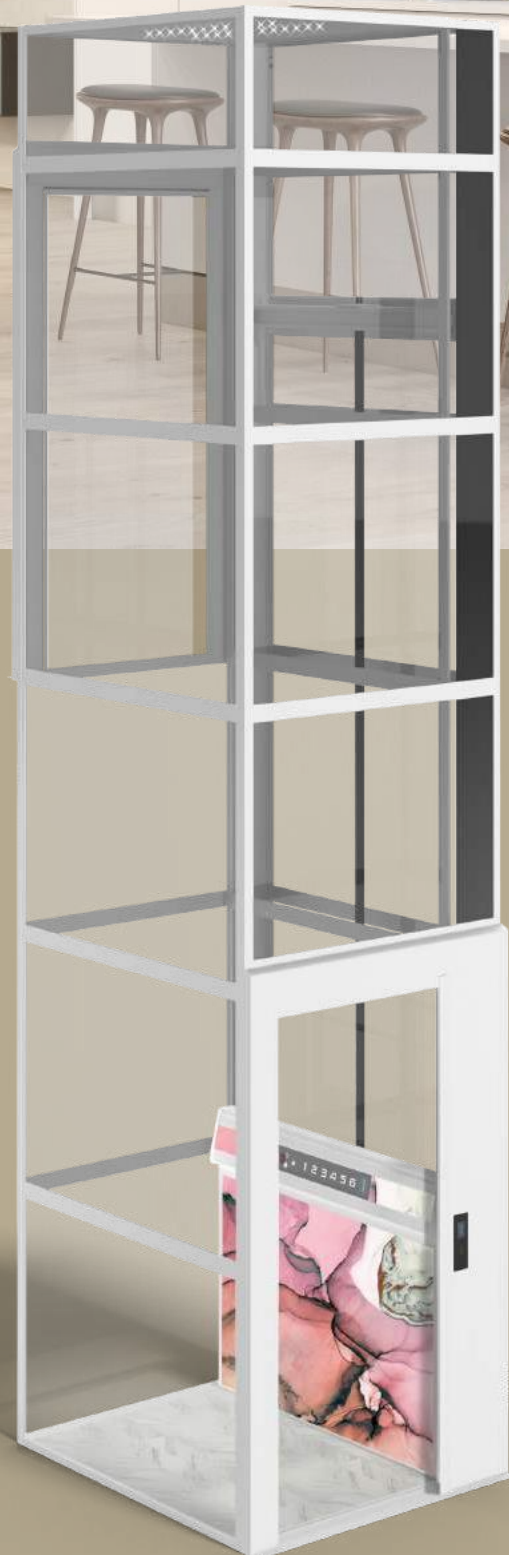
COMPARISON TABLE

FOR ALL MODELS

ASTHETICAL FEATURES						
FEATURES	BASIC MODEL	CLASSIC PLUS	ELEGANCE	AURORA	LIMITED	GALAXY
Platinum Color	✗	Optional	Optional	✓	✓	✓
Platinum Flooring	✗	Optional	Optional	✓	✓	✓
Outdoor Lift	Optional	Optional	Optional	Optional	Optional	Optional
Ceiling Fan	✗	Optional	Optional	Optional	Optional	Optional
Touchscreen Control Panel	✗	✗	✓	✓	✓	✓
Level Indicators	✗	Optional	Optional	✓	✓	✓
Exclusive Patterns	✗	✗	✗	✓	✓	✓
Mirror Ceiling With LED Lights	✗	✗	✓	✓	✓	✓
Call Buttons	Metal	Metal	Metal	Touchscreen	Touchscreen	Touchscreen
Doors	A20	AL5	AL5	AL6	AL6	AL6
Backlit Panels	✗	✗	✗	✓	N/A	✓
Glass panel Ht.	904 mm	1070 mm	1170 mm	1200 mm	1200 mm	1200 mm
Platform Fan (Air)	✗	✗	✗	✗	✗	✓
Shaft LED Lighting (Lit)	✗	✗	✗	✗	✓	✓

SAFETY FEATURES						
FEATURES	BASIC MODEL	CLASSIC PLUS	ELEGANCE	AURORA	LIMITED	GALAXY
Handrail	✓	✓	✓	✓	✓	✓
Safetybar & edges	✓	✓	✓	✓	✓	✓
Power Back up Mode	✓	✓	✓	✓	✓	✓
Automatic lowering system	✓	✓	✓	✓	✓	✓
Alarm	✓	✓	✓	✓	✓	✓
Emergency Button	✓	✓	✓	✓	✓	✓
RFID Reset TAG	✗	✓	✓	✓	✓	✓
Biometric Door Locks	✗	Optional	Optional	Optional	Optional	Optional
Code Door Lock	✗	Optional	Optional	Optional	Optional	Optional
Intercom/GS M phone	✗	Optional	Optional	✓	✓	✓

Optional: Available at extra cost. N/A: Not available



MAESTRO

Scandinavian Design & Swedish Quality



Web: www.maestrohomelifts.com, e-mail - info@maestrohomelifts.com

Contact us - 9903152257, 9674449129

Mohan Ghosh Road, Narendrapur
Ph-2, Narendrapur, Kolkata-
700103

Warehouse (Kolkata)
Dankuni, Kolkata, West Bengal