

Future

LIVING

is Here



MAESTRO HOME LIFTS

# MAESTRO



## KEY FEATURES

- 904 mm of Glass Panel
- A20 Steel Door
- Standard Flooring - Astro Pitch
- Standard White Color - RAL 9016
- CI-CON with 2.2 KW motor
- Standard Ceiling with LED Lights
- Standard Control Panel
- Standard Call Buttons
- 1 year of Maintenance

- 1 year of Warranty
- Limited Sizes Available
- \*\* 10 years of Limited Warranty on the Screw and Drive unit



Steel Door

*\*\*but only if maintenance is done timely by our own technicians through Maestro*



# MAESTRO

## GOLD

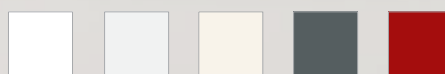
### CLASSIC PLUS

#### KEY FEATURES

- 1070mm Glass Panel
- AL5 Door
- Standard Flooring - Astro Pitch
- RFID TagReset System
- Available From XS to XL Sizes
- CI-CON with 2.2 KW motor
- Standard Ceiling with LED Lights
- Standard Control Panel
- Standard Call Buttons
- 1 year of Maintenance
- 1 year of Warranty
- \*\* 10 years of Limited Warranty on the Screw and Drive unit

#### 5 COLOURS ONLY

- White RAL (RAL 9016)
- White Aluminium (RAL 9006)
- Oyster White (RAL 1013)
- Basalt Grey (RAL 7012)
- Flame Red (RAL 3000)



RAL 9016   RAL 9006   RAL 1013   RAL 7012   RAL 3000



#### UPGRADE PACKAGES:

##### STYLE ME UP:

- Combo 1: Platinum Colours + Floorings
- Combo 2: Bigger Glass Panel Sizes upto 1200mm
- Combo 3: AL6 Door + Level Indicators All Floors

##### WELL BEING:

- Combo 1: Automatic Door + wireless elbow door opener

##### KEEPING YOU SAFE:

- Combo 1: Child lock + Ventilation + Biometric Locks
- Combo 2: Coded Locks + GSM Phone

*\*\*but only if maintenance is done timely by our own technicians through MAESTRO*



# MAESTRO

## GOLD

### VOYAGER ELEGANCE SERIES

#### KEY FEATURES

- 1170 mm Glass Panel
- AL5 Door
- RFID Tag Reset System
- Available From XS to XL Sizes
- Eco-Silent Power saving with 1.5 KW motor
- Mirror Finish Ceiling with LED Lights
- Touchscreen Control Panel
- Standard Call Button
- 1 year of Maintenance
- 1 year of Warranty
- \*\* 10 years of Limited Warranty on the Screw and Drive unit

#### 5 COLOURS ONLY

- > White RAL 9016
- > White Aluminium (RAL 9006)
- > Oyster White (RAL 1013)
- > Basalt Grey (RAL 7012)
- > Flame Red (RAL 3000)



#### UPGRADE PACKAGES:

##### STYLE ME UP:

- Combo 1: Platinum Colours + Floorings
- Combo 2: Bigger Glass Panel Sizes upto 1200mm
- Combo 3: AL6 Door + Level Indicators All Floors

##### WELL BEING:

- Combo 1: Automatic Door + wireless elbow door opener

##### KEEPING YOU SAFE:

- Combo 1: Child lock + Ventilation + Biometric Locks
- Combo 2: Coded Locks + GSM Phone

*\*\*but only if maintenance is done timely by our own technicians through MAESTRO*



# MAESTRO PLATINUM VOYAGER AURORA SERIES

## KEY FEATURES

- 1200mm Glass Panel
- AL6 Door
- Platinum Range of Colours
- Platinum Range of Floorings
- Touchscreen Control Panel
- 26 Platform Designs available
- RFID TagReset
- All Sizes
- ECO-SILENT (1.5 KW Motor)
- Mirror Ceiling with LED lights
- 1 year of Maintainace
- 1 year of Warranty
- \*\* 10 years of Limited Warranty on the Screw and Drive unit



## UPGRADE PACKAGES

### WELL BEING:

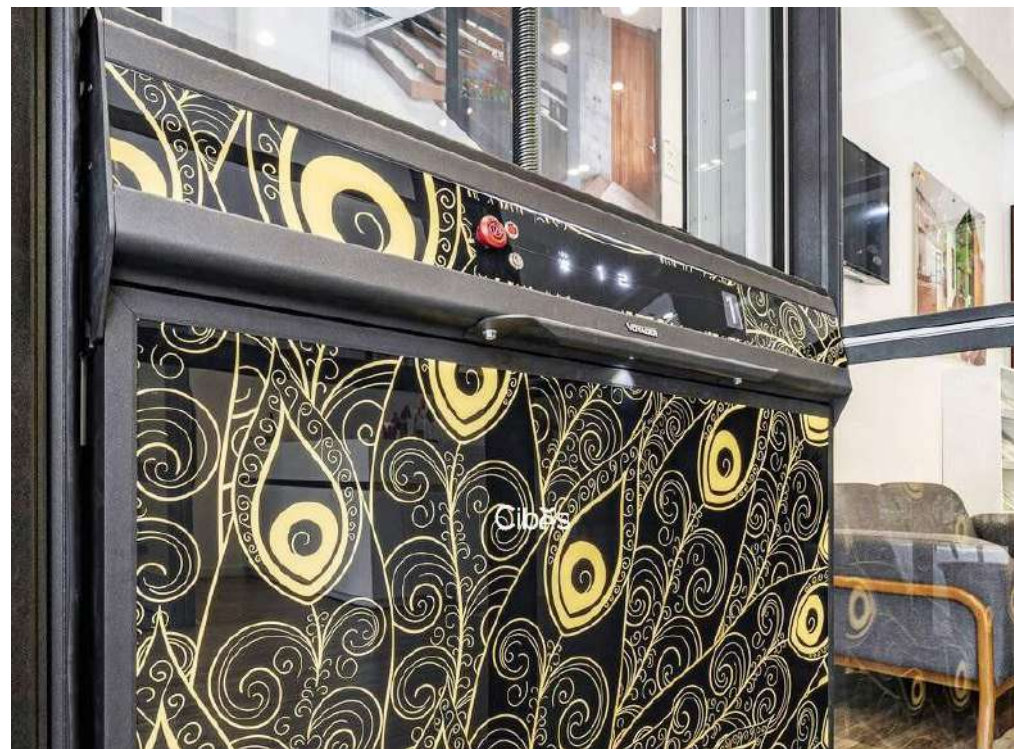
Combo 1: Automatic Door + wireless elbow door opener

### KEEPING YOU SAFE:

Combo 1: Child lock + Ventilation + Biometric Locks/Code Lock

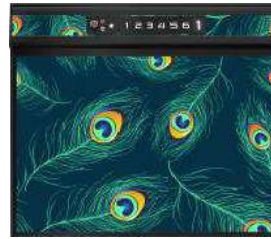
*\*\*but only if maintenance is done timely by our own technicians through MAESTRO*





# PREMIUM PATTERNS VOYAGER AURORA SERIES

LEDBack Lit Luminescent Control & Service Panel with High-End Designs to match the home decoration. Aurora Series has rich background options inspired by the following carefully selected themes.



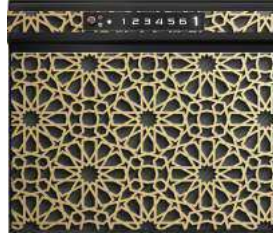
MYTHICAL AURA



ENLIGHTENED BUDDAH



BASILIKA MARBLE



MASHRABIYA GOLD



SERENE DAWN



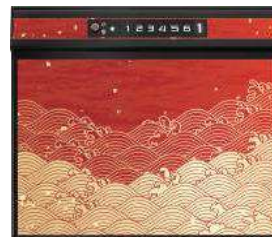
BASILIKA MARBLE



SANDSTONE CANYON



COBALT BLUE



SEVEN ISLAND



NEW ORLEANS



GOLDEN TOPAZ



EVENING AGATE



VERONA



INCA



NOVA CLOUDS



IMPERIAL BLACK



YEREVAN



IONA  
IONA



CLAY PARFAIT



CINNABAR ROSE



EULER



TUSCAN SUN



PHARAOH



DRAGON SEA



LONG SPRING



PAVONA FEATHERS



# LIFT COLORS



## FOREST FLOOR



## PREMIUM CARPETS



# MAESTRO PLATINUM VOYAGER GALAXY SERIES

## KEY FEATURES

- 1200 mm Glass Panel
- AL6 Door
- Platinum Color Range
- Platinum Flooring Range
- 2 Premium Designs to choose from
- 7 color LEDback-light Platform
- Full Shaft 7 color LED Lighting
- RFID Tag Reset System
- Available From XS to XL Sizes
- Eco-Silent Power saving with 1.5 KW motor
- Special Drop Ceiling with Clove LED lighting
- Touchscreen Control Panel
- Touchscreen Call Buttons with level Indicator
- 1 year of Maintenance
- 1 year of Warranty
- \*\* 10 years of Limited Warranty on the Screw and Drive unit



## UPGRADE PACKAGES

### WELL BEING:

Combo 1: Automatic Door + wireless elbow door opener

### KEEPING YOU SAFE:

Combo 1: Child lock + Ventilation + Biometric Locks/Code Lock

*\*\*but only if maintenance is done timely by our own technicians through MAESTRO*



# LIGHT UP EFFECTS

## VOYAGER GALAXY SERIES

High Tech Effect RGBW LED Laser Light Effect on Control & Service Panel (fixed or changing LED colors).

Note: Fixed or changing through 7 selectable LED colors.



## TWO PATTERNS



AWAKENING



FARADAY





### LIFT COLORS



### FOREST FLOOR



### PREMIUM CARPETS



# MAESTRO PLATINUM VOYAGER LIMITED EDITION

## KEY FEATURES

- 1200 mm Glass Panel
- AL6 Door
- Platinum Color Range
- Platinum Flooring Range
- 5 Premium Designs to choose from
- Full Shaft 7 color LED Lighting
- RFID Tag Reset System
- Available From XS to XL Sizes
- Eco-Silent Power saving with 1.5 KW motor
- Special Drop Ceiling with Clove LED lighting
- Touchscreen Control Panel
- Touchscreen Call Buttons with level Indicator
- 1 year of Maintenance
- 1 year of Warranty
- \*\* 10 years of Limited Warranty on the Screw and Drive unit



## UPGRADE PACKAGES

### WELL BEING:

Combo 1: Automatic Door + wireless elbow door opener

### KEEPING YOU SAFE:

Combo 1: Child lock + Ventilation + Biometric Locks/Code Lock

*\*\*but only if maintenance is done timely by our own technicians through MAESTRO*





# HIGH END FINISHES

## VOYAGER LIMITED SERIES

On all aluminum surfaces of platform to provide a premium feel. Available in leather, wood and carbon fiber finishes.

5 CHOICES OF 3M DI-NOC FINISHES TO CHOOSE FROM

- All metal parts are covered. Can also custom select
- but price high.

Eco-leather stitched traditional handrail.

\*For M size 1220 x1380 mm and above, our wood finishes only have horizontal grains available not vertical.



BLACK LEATHER



CARBON FIBER



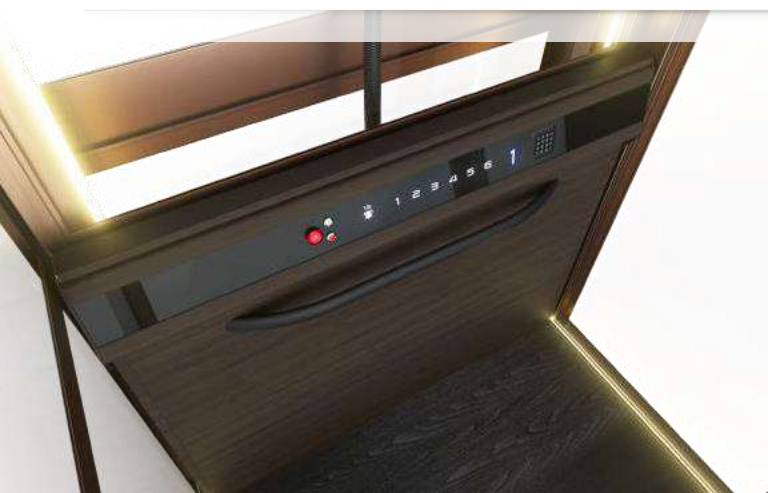
BROWN LEATHER



DARK WOOD



LIGHT WOOD



## VOYAGER LIT AS STANDARD

Lighting along 4 sides glass shaft & safety edge into the ceiling lighting system with control integrated with LED multi-color control system to provide a pleasant using environment.

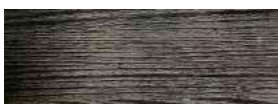
*Big improvement for who want the most modern lighting experience.*



## LIFT COLORS



## FOREST FLOOR



## PREMIUM CARPETS



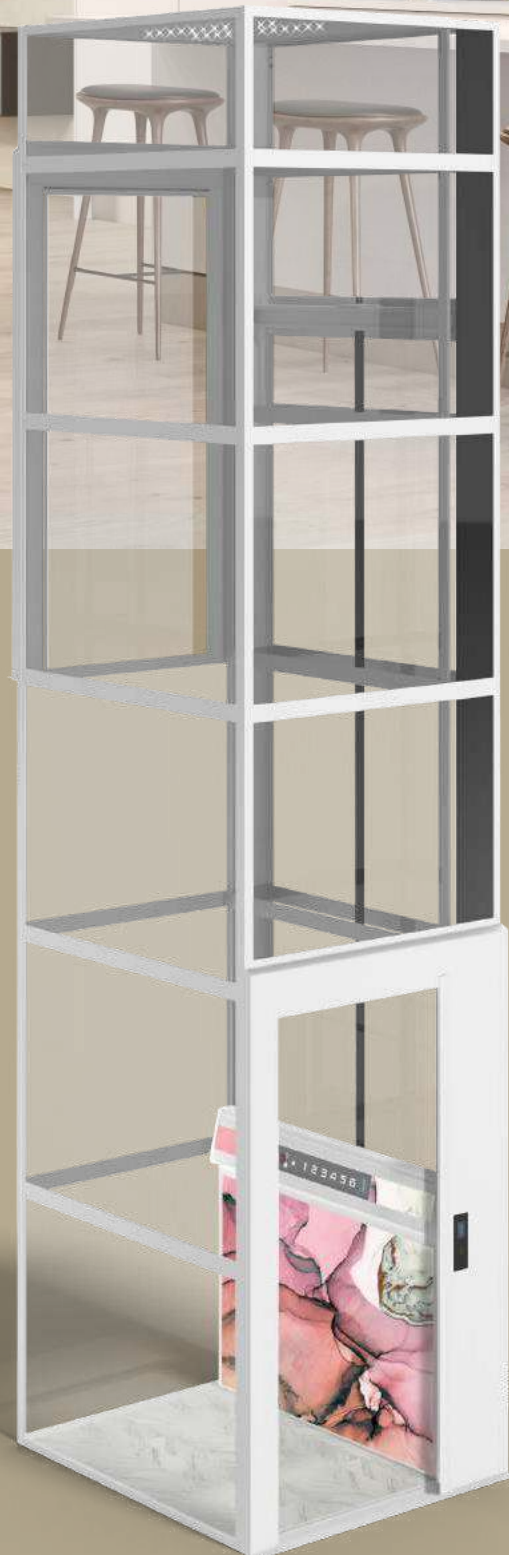
# COMPARISON TABLE

## FOR ALL MODELS

| ASTHETICAL FEATURES            |             |              |          |             |             |             |
|--------------------------------|-------------|--------------|----------|-------------|-------------|-------------|
| FEATURES                       | BASIC MODEL | CLASSIC PLUS | ELEGANCE | AURORA      | LIMITED     | GALAXY      |
| Platinum Color                 | ✗           | Optional     | Optional | ✓           | ✓           | ✓           |
| Platinum Flooring              | ✗           | Optional     | Optional | ✓           | ✓           | ✓           |
| Outdoor Lift                   | Optional    | Optional     | Optional | Optional    | Optional    | Optional    |
| Ceiling Fan                    | ✗           | Optional     | Optional | Optional    | Optional    | Optional    |
| Touchscreen Control Panel      | ✗           | ✗            | ✓        | ✓           | ✓           | ✓           |
| Level Indicators               | ✗           | Optional     | Optional | ✓           | ✓           | ✓           |
| Exclusive Patterns             | ✗           | ✗            | ✗        | ✓           | ✓           | ✓           |
| Mirror Ceiling With LED Lights | ✗           | ✗            | ✓        | ✓           | ✓           | ✓           |
| Call Buttons                   | Metal       | Metal        | Metal    | Touchscreen | Touchscreen | Touchscreen |
| Doors                          | A20         | AL5          | AL5      | AL6         | AL6         | AL6         |
| Backlit Panels                 | ✗           | ✗            | ✗        | ✓           | N/A         | ✓           |
| Glass panel Ht.                | 904 mm      | 1070 mm      | 1170 mm  | 1200 mm     | 1200 mm     | 1200 mm     |
| Platform Fan (Air)             | ✗           | ✗            | ✗        | ✗           | ✗           | ✓           |
| Shaft LED Lighting (Lit)       | ✗           | ✗            | ✗        | ✗           | ✓           | ✓           |

| SAFETY FEATURES           |             |              |          |          |          |          |
|---------------------------|-------------|--------------|----------|----------|----------|----------|
| FEATURES                  | BASIC MODEL | CLASSIC PLUS | ELEGANCE | AURORA   | LIMITED  | GALAXY   |
| Handrail                  | ✓           | ✓            | ✓        | ✓        | ✓        | ✓        |
| Safetybar & edges         | ✓           | ✓            | ✓        | ✓        | ✓        | ✓        |
| Power Back up Mode        | ✓           | ✓            | ✓        | ✓        | ✓        | ✓        |
| Automatic lowering system | ✓           | ✓            | ✓        | ✓        | ✓        | ✓        |
| Alarm                     | ✓           | ✓            | ✓        | ✓        | ✓        | ✓        |
| Emergency Button          | ✓           | ✓            | ✓        | ✓        | ✓        | ✓        |
| RFID Reset TAG            | ✗           | ✓            | ✓        | ✓        | ✓        | ✓        |
| Biometric Door Locks      | ✗           | Optional     | Optional | Optional | Optional | Optional |
| Code Door Lock            | ✗           | Optional     | Optional | Optional | Optional | Optional |
| Intercom/GS M phone       | ✗           | Optional     | Optional | ✓        | ✓        | ✓        |

Optional: Available at extra cost. N/A: Not available



# MAESTRO

Scandinavian Design & Swedish Quality



---

Web: [www.maestrohomelifts.com](http://www.maestrohomelifts.com), e-mail - [info@maestrohomelifts.com](mailto:info@maestrohomelifts.com)

Contact us - 9903152257, 9674449129

Mohan Ghosh Road, Narendrapur  
Ph-2, Narendrapur, Kolkata-  
700103

Warehouse (Kolkata)  
Dankuni, Kolkata, West Bengal